



**Wolseley Road | Rugeley | WS15 2GJ**  
**Offers In The Region Of £145,000**





## Summary

**\*\* POPULAR LOCATION \*\* GROUND FLOOR APARTMENT \*\* OPEN PLAN LIVING AREA/ KITCHEN \*\* TWO BEDROOMS \*\* ENSUITE \*\* OFF ROAD PARKING \*\* GARAGE \*\* CLOSE TO AMENITIES \*\* IDEAL FOR FIRST TIME BUYERS \*\* VIEWING ADVISED \*\***

WEBBS ESTATE AGENTS are pleased to market this two bedroom, ground floor apartment located in a popular area of Rugeley on Howell Mews. Viewing of the property is advised to fully appreciate the deceptive size and space of the accommodation on offer. The property would be ideally suited to a first time buyer looking to get their foot on the property ladder. The internal accommodation briefly comprises; entrance hallway, open plan living area/ kitchen, two bedrooms, ensuite and bathroom. The property also benefits allocated parking and a single garage.

## Key Features

- POPULAR LOCATION
- OPEN PLAN LIVING AREA/ KITCHEN
- ENSUITE
- GARAGE
- IDEAL FOR FIRST TIME BUYERS
- GROUND FLOOR APARTMENT
- TWO BEDROOMS
- OFF ROAD PARKING
- CLOSE TO AMENITIES
- VIEWING ADVISED

## Rooms and Dimensions

### Hallway

### Living Area/ Kitchen

22'1 x 13'1 (6.73m x 3.99m)

### Bedroom 1

12'6 x 9'8 (3.81m x 2.95m)

### Ensuite

8'6 x 4'10 (2.59m x 1.47m)

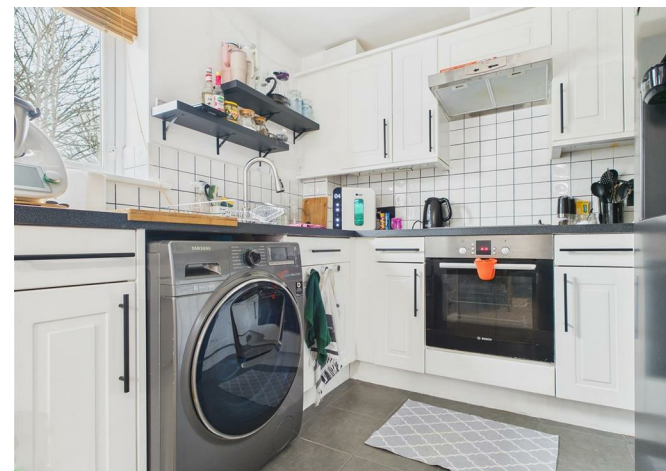
### Bedroom 2

9'3 x 9'8 (2.82m x 2.95m)

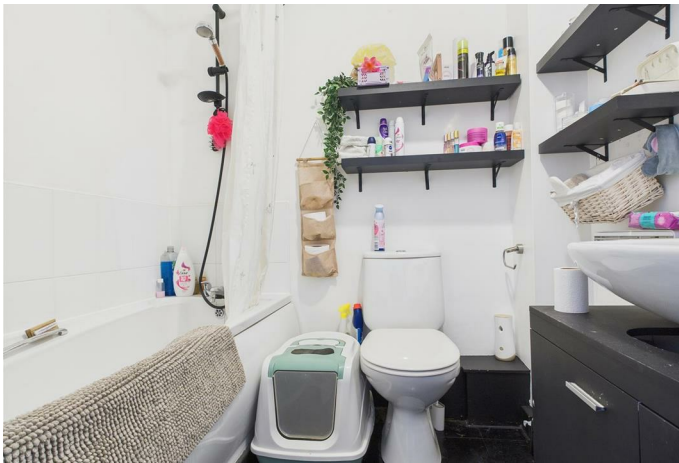
### Bathroom

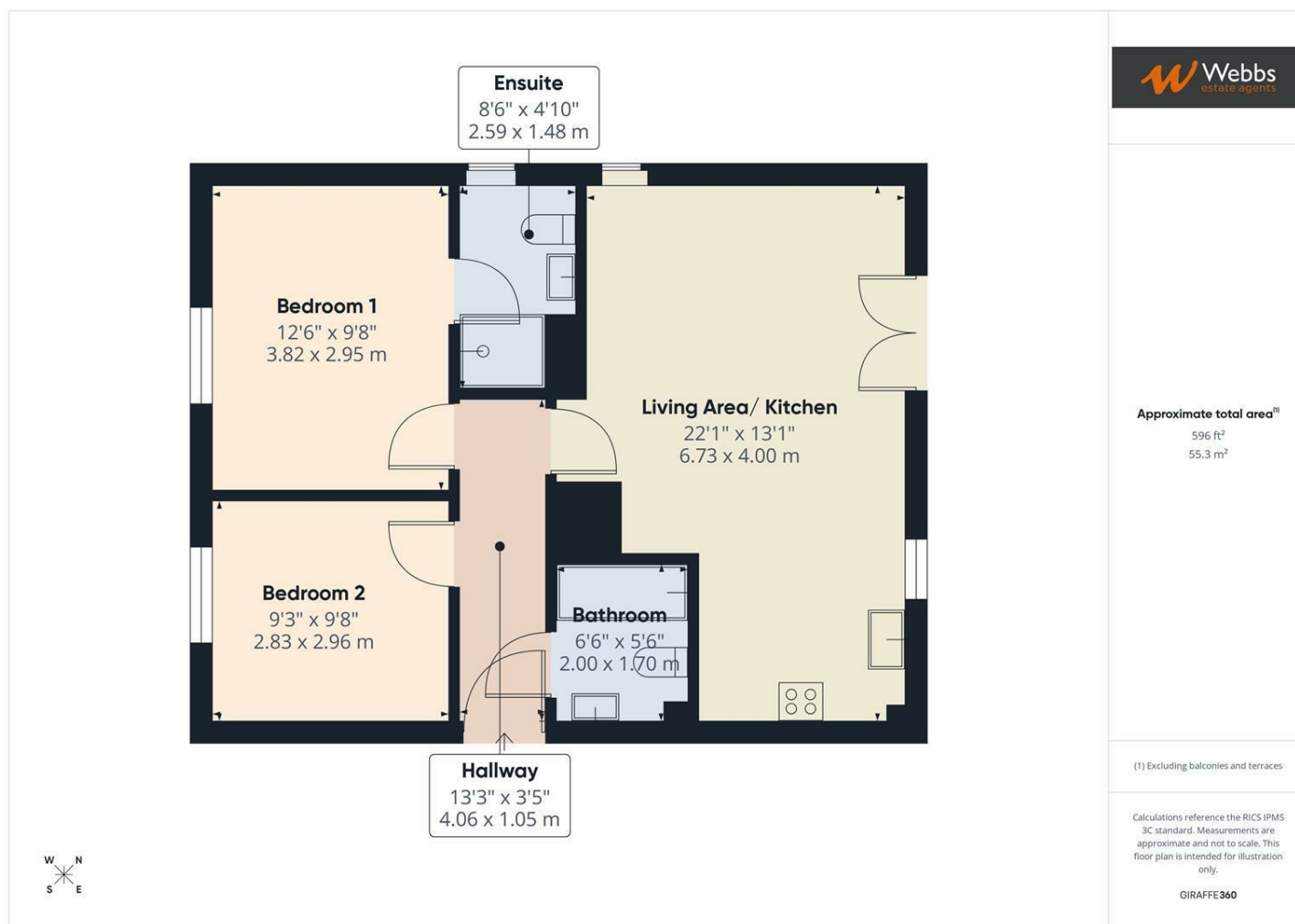
6'6 x 5'6 (1.98m x 1.68m)

### Identification Checks (R)









Webbs Estate Agents - endeavour to maintain accurate depictions of properties in Virtual Tours, Floor Plans and descriptions, however, these are intended only as a guide and purchasers must satisfy themselves by personal inspection.

